

House Of The Lord

(based on the recording by Phil Wickham)

Words and Music by
Phil Wickham and Jonathan Smith

INTRO

$\text{♩} = 86$ G G2 G Dsus C2 Dsus G G2



6 G Dsus C2 Dsus



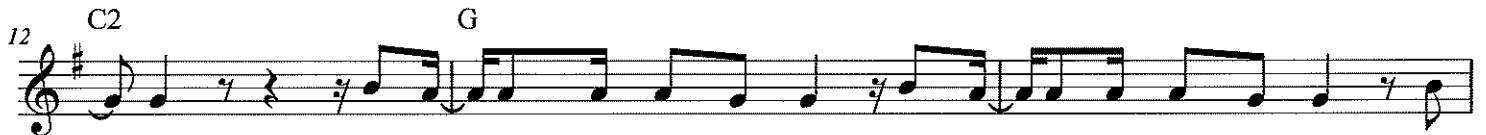
1. We wor-

VERSE 1

G Em D(4)



ship the God who was. We wor - ship the God who is. We wor - ship the God who ev - er - more will



be. He o - pened the pris - on doors. He part - ed the rag - ing sea. My

CHORUS 1a

Em D(4) C2 G



God, He holds the vic - to - ry, yeah. There's joy in the house of the Lord.



There's joy in the house of the Lord to - day. And we won't be qui - et.



We shout out Your praise. There's joy in the house of the Lord. Our God is sure - ly in this

CCLI Song # 7168995

© 2020 Be Essential Songs | Cashagamble Jet Music | Phil Wickham Music | Simply Global Songs
For use solely with the SongSelect® Terms of Use. All rights reserved. www.ccli.com

CCLI License # 73737

INTERLUDE 1

23 C2 2nd time to Coda \oplus C/D G G2

place. And we won't be qui - et. We shout out Your praise. Oh, oh,

VERSE 2

26 G Dsus C2 Dsus G

oh, we shout out Your praise. 2. We sing to the God who heals. We sing

30 Em D(4) C2

to the God who saves. We sing to the God who al - ways makes a way. 'Cause He hung

33 G Am7 Em D(4)

up - on that cross then He rose up from that grave. My God's still roll - ing stones

36 C2 *D.S. al Coda*

a - way.

37 \oplus Coda C/D G

We shout out Your praise. We were the

BRIDGE 1a

G D/G G

beg - gars. Now we're roy - al - ty. We were the pris - 'ners. Now we're

43 D/G G Em C G

run - ning free. we are for - giv - en, ac - cept - ed, re - deemed by His grace. Let the

BRIDGE 1b

46 D C G G

house of the Lord sing praise. 'Cause we were the beg - gars. Now we're

49 D/G G D/G G D/F#

roy - al - ty. We were the pris - 'ners. Now we're run - ning free. We are for -

52 Em C G D C G

giv - en, ac - cept - ed, re - deemed by His grace. Let the house of the Lord sing praise.

CHORUS 1b

N.C.

There is joy in this house.

There's joy in the house of the Lord. There's joy in the house of the Lord to - day.

58

Oh yeah,

And we won't be qui - et. We shout out Your praise.

60 G D(4)

There is joy, there is joy!

There's joy in the house of the Lord. Our God is sure - ly in this

62 C2 N.C.

And we won't be qui - et. We're gon - na shout out Your praise!

place. And we won't be qui - et. We shout out Your praise.

CHORUS 1a

G D

There's joy in the house of the Lord. There's joy in the house of the Lord to -

There's joy in the house of the Lord. There's joy in the house of the Lord to - day.

66 C2 C/D

day. We're gon - na shout out Your praise!

And we won't be qui - et. We shout out Your praise.

68 G D

There is joy, there is joy sure - ly in

There's joy in the house of the Lord. Our God is sure - ly in this

ENDING

70 C2 C/D G G2

this place. We won't be qui - et. We shout out Your praise!

73 G Dsus C2 Dsus

We shout out Your praise! There is joy in this house, there is joy in this house to -

76 G G2 G Dsus C2 Dsus

day! We shout out Your praise! We shout out Your praise..

80 G Am7 Em D C

Made To Worship

Words and Music by
Chris Tomlin, Stephan Conley Sharp
and Ed Cash

VERSE 1

♩ = 86

B

B2/A#

1. Be fore the day, be - fore the light, be -

G#m

E

F#

B

3 fore the world re - volved a - round the sun. God on high stepped down in -

B2/A#

G#m

E

F#

6 to time, and wrote the sto - ry of His love for ev - 'ry - one.

PRE-CHORUS

E
%

F#

E

B/F#

E

He has filled our hearts with won - der, so that we al - ways re - mem - ber:

CHORUS

B

E

C#m7

You and I are made to wor - ship, you and I are called to love, You and I are for - giv - en and free.

F#7

B

E

16 When you and I em - brace sur - ren - der, when you and I choose to be - lieve, then

CCLI Song # 4794118

© 2006 New Spring | Stenpan Music | Rising Springs Music | Vamos Publishing | worshiptogether.com songs | Wondrously Made Songs
For use solely with the SongSelect® Terms of Use. All rights reserved. www.ccli.com

CCLI License # 73737

C#m7 F#7
2nd time to Coda

B

B

VERSE 2

19 you and I will see who we were meant to be. 2. All we are and

B2/A# G#m E F#

24 all we have, is all a gift from God that we re - ceive.

B B2/A# G#m

27 Brought to life we o - pen up our eyes, to see the maj - es - ty and glo - ry of the King.

E F# F#7 C#m7
Coda

D.S. al Coda

BRIDGE

30 who we were meant to be. E - ven the rocks cry out,

B/D# E F#7

33 e - ven the heav - ens shout, at the sound of His Ho - ly name.

C#m7 B/D# E

36 So let ev - 'ry voice sing out, let ev - 'ry knee bow down, He's wor - thy of

CHORUS

F#7 B E

39 all our praise. You and I are made to wor - ship, you and I are called to love,

C#m7 F#7

42 You and I are for - giv - en and free. (Yeah.) When

44 B E C#m7

you and I em - brace sur - ren - der, when you and I choose to be - lieve, then you and I will see

ENDING

47 | 1 F#7 | 2 F#7 B

you and I will see. who we were meant to be. Yeah,

50 E C#m7 F#7 B

we were meant to be, oo. You and I, you and I

54 E C#m7 F#7 B

yeah, yeah, oo. We were meant to be. —

Here I Am To Worship

(as published by Survivor)

Words and Music by
Tim Hughes

VERSE

♩ = 75

B F#sus C#m B F#sus

1. Light of the world, You stepped down in - to dark - ness, o - pened my eyes, let me
2. King of all days, oh so high - ly ex - alt - ed, glo - rious in heav - en a -

E2(no3) B F#sus C#m B F#sus

4

see. Beau - ty that made this heart a - dore You, hope of a life spent with
bove. Hum - bly You came to the earth You cre - a - ted, all for love's sake be - came

CHORUS

E2(no3) F#7sus B F#/A#

8

You. So, here I am to wor - ship, here I am to bow down, here I am to
poor.

B/D# E B

12

say that You're my God. And You're al - to - geth - er love - ly, al - to - geth - er

F#/A# B/D# Last time to Coda E E2(no3) E

15

wor - thy, al - to - geth - er won - der - ful to me.

And I'll nev -

CCLI Song # 3266032

© 2000 Thankyou Music

For use solely with the SongSelect® Terms of Use. All rights reserved. www.ccli.com

CCLI License # 73737

BRIDGE

1

F#/A# B/D# E F#/A# B/D# E

er know how much it cost to see my sin up - on that cross. And I'll nev

2

24 E F#7sus D.S. al Coda

that cross. So, here I am to

26 Coda E2(no3) B

Coda

Here It Is (I Worship You)

(based on the recording by Passion, feat. Kristian Stanfill & Sean Curran)

Words and Music by
David Leonard, Jacob Sooter,
Kristian Stanfill and Sean Curran

INTRO

♩ = 63 B Bsus B Bsus

VERSE 1 & 2

B/D# E B B/D# E

1. Lord I long to bring an of - fring, but I don't know where to start.
Some - times I can - not find the lan - guage, some - times I'm at a loss for words.

8 F#sus F# B/D# E B B/D# E

All I have is on the ta - ble. I won't hold back a sin - gle part.
I just want to give You some - thing to let You know that You're still first..

CHORUS

12 F#sus F# E2 F#(4) B E2 F#(4) B

I wor - ship You. I wor - ship You. You're the

17 E2 F#(4) G#m7 F#(4) E2 F#(4) B Bsus

2nd time to Coda ⊕

one I love, You're the one I choose. I wor - ship You.

CCLI Song # 7214413

© Capitol CMG Paragon | KPS 1.0 | sixsteps Music | sixsteps Songs | Sounds Of Jericho | worshiptogether.com songs | Be Essential Songs | Just When Publishing | Shout It | So Essential Tunes

For use solely with the SongSelect® Terms of Use. All rights reserved. www.ccli.com

CCLI License # 73737

VERSE 3

B5 B B/D# E F#sus F#

Life is full of man - y sea - sons; I've felt the shad - ow and the sun.

26 B/D# E F#sus G#m7 B/D# E F#sus F# *D.S. al Coda*

Through the feast and through the fam - ine, this is my song in ev - 'ry one.

INSTRUMENTAL

30 Coda F#(4) B Bsus B Bsus

I wor - ship You. If

BRIDGE

B/D# E2 F#(4) G#m7 B/D# E2

all You ev - er want - ed was my heart, here it is, here it is. I lay it all on the al -

CHORUS

1, 2, 3 | 4

38 F#sus F# F#sus F# E2 F#(4) B E2 F#(4)

tar. If tar. I wor - ship You. I wor - ship You.

43 B E2 F#(4) G#m7 F#(4) E2 F#(4)

You're the one I love, You're the one I choose. I wor - ship You.

47

1 B

2 B

You're the

The Heart Of Worship

(as published by Worship Together)

Words and Music by
Matt Redman

VERSE

♩ = 70



1. When the mu - sic fades, all is stripped a - way, and I sim - ply come;
2. King of end - less worth, no one could ex - press how much You de - serve.

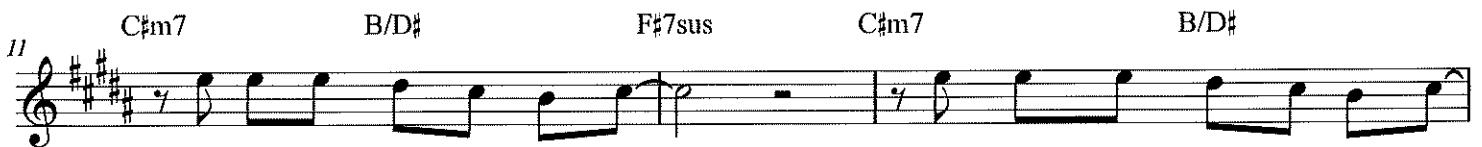


Long - ing just to bring some - thing that's of worth
Though I'm weak and poor, all I have is Yours,

PRE-CHORUS



that will bless Your heart. I'll bring You more than a song, for a song in it - self
ev - 'ry sin - gle breath.



is not what You have re - quired. You search much deep - er with - in



through the way things ap - pear; You're look - ing in - to my heart.

CCLI Song # 2296522

© 1999 Thankyou Music

For use solely with the SongSelect® Terms of Use. All rights reserved. www.ccli.com

CCLI License # 73737

CHORUS

B2 F#2/A# C#m7 B/D#

I'm com - ing back to the heart of wor - ship, and it's all a - bout You,

20 E F#7sus B2 F#2/A#

all a - bout You, Je - sus. I'm sor - ry, Lord, for the thing I've made it, when it's

23 C#m7 B/D# E F#7sus B

all a - bout You, all a - bout You, Je - sus. —